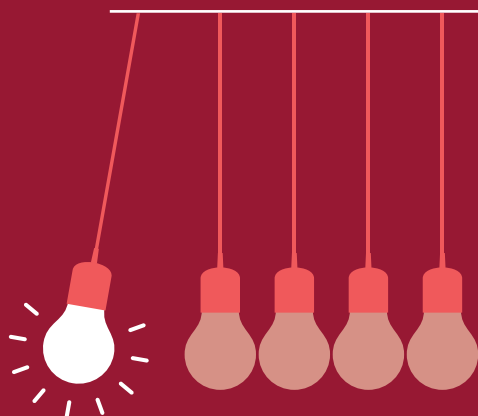


# DIPLÔMES UNIVERSITAIRES

Livret de formation



**NOS ÉTUDIANTS  
NE LAISSENT  
PAS INDIFFÉRENT  
PARCE QUE NOUS  
CULTIVONS LEURS  
DIFFÉRENCES.**

---

Une offre variée de diplômes universitaires  
spécialisés, incluant des formations executives.  
Des domaines privilégiés : comptabilité-  
gestion, entrepreneuriat, santé, anglais...

---

**CULTIVONS  
LA DIFFÉRENCE !**

[www.montpellier-management.fr](http://www.montpellier-management.fr)



**MONTEPELLIER  
MANAGEMENT**  
UNIVERSITÉ DE MONTPELLIER





## CONTINUED EDUCATION

Today's political and economic context is leading health establishment directors to reinforce their efforts concerning management training for health organizations. Development of chronic diseases, aging population, and costs considerations, orient countries to new challenges in the management of their organizations. This diploma is a professional program designed for directors of health organizations.

The DHM program provides a high level of expertise to work within health care organisations. It contributes to develop new managerial practices based on research. It provides expertise on the following topic : how to face to new challenges and create new opportunities in health care sector. The DHM program is not a PHD Program.

DHM program educates students to new managerial skills in Health Sector and how use managerial tools to enhance performance.

Most courses are taught in English, with work documents also provided in English. Completion of the diploma requires students to produce a scientific work based on management science research methods concerning a managerial challenge.

## Course objectives

The Doctorate in Health Management degree focuses on the following skills and knowledge :

- Developing expertise in new health management approaches that combine care, ethics, and overall establishment performance
- Stimulating a sense of innovation (managerial innovation in particular)
- Applying a theoretical dimension to problem solving in the field
- Broadening experience via a strong international focus



## Career opportunities

- ▷ Health establishment management (national and international)
- ▷ Medical equipment business management (national and international)
- ▷ Pharmaceutical business management (national and international)
- ▷ Retirement home management (national and international)
- ▷ Funding organization management in the health sector (national and international)
- ▷ Occupational rehabilitation facility management (national and international)

## Admission requirements

5-year university degree or validation of professional experience and demonstrated professional experience as a health establishment director.

Proposal of a managerial study topic.



## Partners



### CONTACTS :

Academic Director : Irène GEORGESCU

Program contact in China : zhoushuying@ucmt.com

Program contact in France : moma-edba@umontpellier.fr

[www.montpellier-management.fr/formations/](http://www.montpellier-management.fr/formations/)